



Gardenia
— HASTINGS —



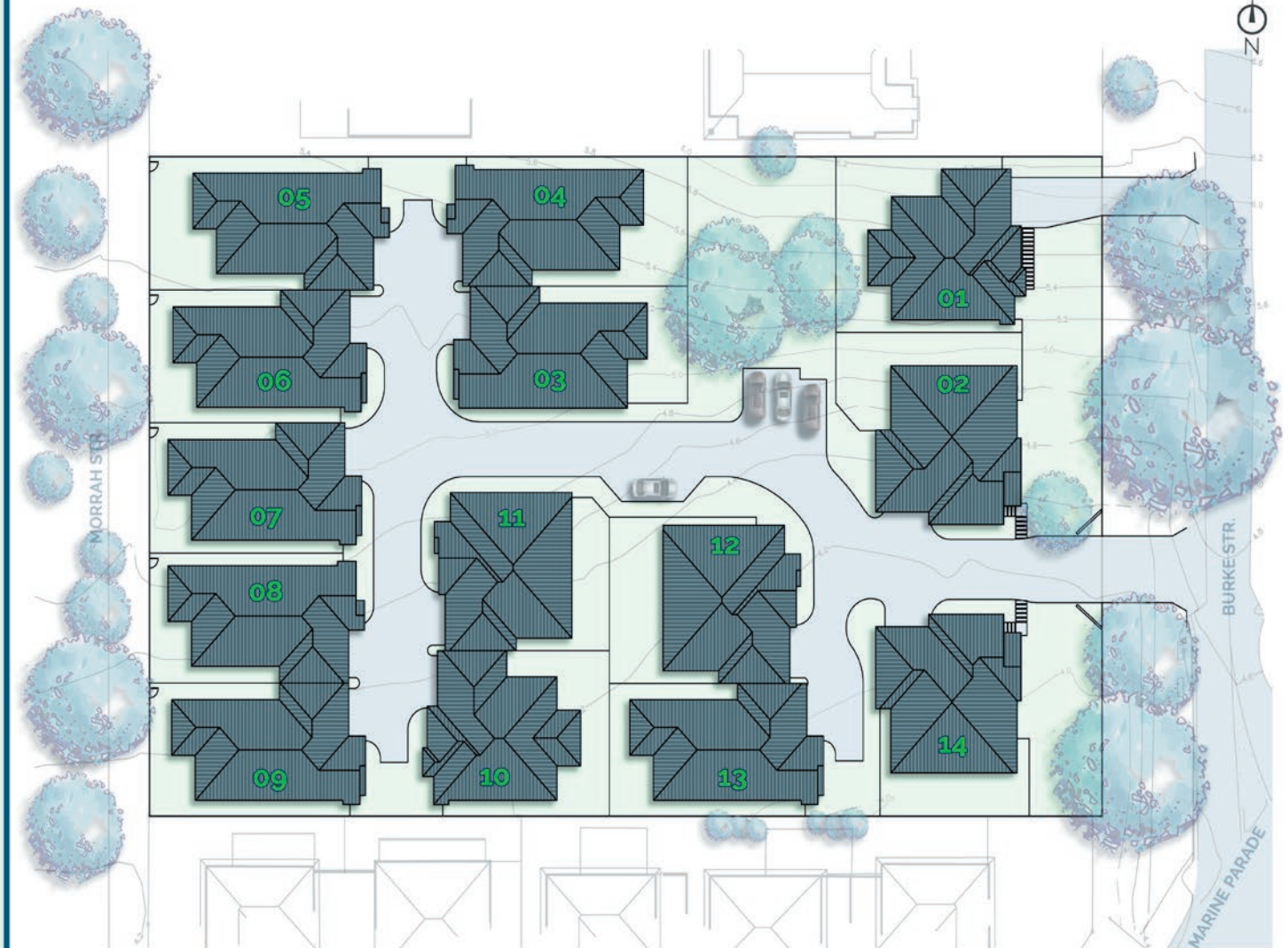
Gardenia

HASTINGS

| | |
|---------------------------------|---------------------------------|
| RESIDENCE 01 | RESIDENCE 08 |
| Internal - 120.5 m ² | Internal - 122.5 m ² |
| Garage - 38.2 m ² | Garage - 37.5 m ² |
| Total - 158.7 m ² | Total - 160.0 m ² |
| Backyard - 103 m ² | Backyard - 54 m ² |
| RESIDENCE 02 | RESIDENCE 09 |
| Internal - 126.6 m ² | Internal - 123.0 m ² |
| Garage - 37.3 m ² | Garage - 38.0 m ² |
| Total - 163.9 m ² | Total - 161.0 m ² |
| Backyard - 87 m ² | Backyard - 62 m ² |
| RESIDENCE 03 | RESIDENCE 10 |
| Internal - 123.0 m ² | Internal - 120.5 m ² |
| Garage - 38.0 m ² | Garage - 38.2 m ² |
| Total - 161.0 m ² | Total - 158.7 m ² |
| Backyard - 72 m ² | Backyard - 84 m ² |
| RESIDENCE 04 | RESIDENCE 11 |
| Internal - 122.5 m ² | Internal - 122.4 m ² |
| Garage - 37.5 m ² | Garage - 37.3 m ² |
| Total - 160.0 m ² | Total - 159.7 m ² |
| Backyard - 85 m ² | Backyard - 66 m ² |
| RESIDENCE 05 | RESIDENCE 12 |
| Internal - 122.5 m ² | Internal - 122.4 m ² |
| Garage - 37.5 m ² | Garage - 37.3 m ² |
| Total - 160.0 m ² | Total - 159.7 m ² |
| Backyard - 87 m ² | Backyard - 93 m ² |
| RESIDENCE 06 | RESIDENCE 13 |
| Internal - 123.0 m ² | Internal - 123.0 m ² |
| Garage - 38.0 m ² | Garage - 38.0 m ² |
| Total - 161.0 m ² | Total - 161.0 m ² |
| Backyard - 61 m ² | Backyard - 57 m ² |
| RESIDENCE 07 | RESIDENCE 14 |
| Internal - 123.0 m ² | Internal - 126.6 m ² |
| Garage - 38.0 m ² | Garage - 37.3 m ² |
| Total - 161.0 m ² | Total - 163.9 m ² |
| Backyard - 53 m ² | Backyard - 77 m ² |

.....

This document has been produced solely for the information for potential purchaser, to assist them in deciding whether they are sufficiently interested in the properties to proceed further. The information contained in this material has been produced in good faith with due care. We do not warrant the accuracy of any information contained herein and do not accept liability for negligence, any error or discrepancy or otherwise in the information. This document may be subject to change without notice.





Gardenia

HASTINGS



Residence 01

-  - 3
-  - 2
-  - 2

Internal - 120.5 m²
 Garage - 38.2 m²
 Total Area - 158.7 m²
 Backyard - 103 m²



This document has been produced solely for the information for potential purchaser, to assist them in deciding whether they are sufficiently interested in the properties to proceed further. The information contained in this material has been produced in good faith with due care. We do not warrant the accuracy of any information contained herein and do not accept liability for negligence, any error or discrepancy or otherwise in the information. This document may be subject to change without notice.





Gardenia

HASTINGS

Residence 02

- 3
- 2
- 2

Internal - 126.6 m²

Garage - 37.3 m²

Total Area - 163.9 m²

Backyard - 87 m²



This document has been produced solely for the information for potential purchaser, to assist them in deciding whether they are sufficiently interested in the properties to proceed further. The information contained in this material has been produced in good faith with due care. We do not warrant the accuracy of any information contained herein and do not accept liability for negligence, any error or discrepancy or otherwise in the information. This document may be subject to change without notice.





Residence 03

-  - 3
-  - 2
-  - 2

Internal - 123.0 m²
 Garage - 38.0 m²
 Total Area - 161.0 m²
 Backyard - 72 m²



This document has been produced solely for the information for potential purchaser, to assist them in deciding whether they are sufficiently interested in the properties to proceed further. The information contained in this material has been produced in good faith with due care. We do not warrant the accuracy of any information contained herein and do not accept liability for negligence, any error or discrepancy or otherwise in the information. This document may be subject to change without notice.





Residence 04

-  - 3
-  - 2
-  - 2

Internal - 122.5 m²

Garage - 37.5 m²

Total Area - 160.0 m²

Backyard - 85 m²



This document has been produced solely for the information for potential purchaser, to assist them in deciding whether they are sufficiently interested in the properties to proceed further. The information contained in this material has been produced in good faith with due care. We do not warrant the accuracy of any information contained herein and do not accept liability for negligence, any error or discrepancy or otherwise in the information. This document may be subject to change without notice.





Residence 05

-  - 3
-  - 2
-  - 2

Internal - 122.5 m²
 Garage - 37.5 m²
 Total Area - 160.0 m²
 Backyard - 87 m²



This document has been produced solely for the information for potential purchaser, to assist them in deciding whether they are sufficiently interested in the properties to proceed further. The information contained in this material has been produced in good faith with due care. We do not warrant the accuracy of any information contained herein and do not accept liability for negligence, any error or discrepancy or otherwise in the information. This document may be subject to change without notice.



Residence 06

-  - 3
-  - 2
-  - 2

Internal - 123.0 m²
 Garage - 38.0 m²
 Total Area - 161.0 m²
 Backyard - 61 m²



This document has been produced solely for the information for potential purchaser, to assist them in deciding whether they are sufficiently interested in the properties to proceed further. The information contained in this material has been produced in good faith with due care. We do not warrant the accuracy of any information contained herein and do not accept liability for negligence, any error or discrepancy or otherwise in the information. This document may be subject to change without notice.





Residence 07

-  - 3
-  - 2
-  - 2

Internal - 123.0 m²
 Garage - 38.0 m²
 Total Area - 161.0 m²
 Backyard - 53 m²



This document has been produced solely for the information for potential purchaser, to assist them in deciding whether they are sufficiently interested in the properties to proceed further. The information contained in this material has been produced in good faith with due care. We do not warrant the accuracy of any information contained herein and do not accept liability for negligence, any error or discrepancy or otherwise in the information. This document may be subject to change without notice.





Residence 08

-  - 3
-  - 2
-  - 2

Internal - 122.5 m²

Garage - 37.5 m²

Total Area - 160.0 m²

Backyard - 54 m²



This document has been produced solely for the information for potential purchaser, to assist them in deciding whether they are sufficiently interested in the properties to proceed further. The information contained in this material has been produced in good faith with due care. We do not warrant the accuracy of any information contained herein and do not accept liability for negligence, any error or discrepancy or otherwise in the information. This document may be subject to change without notice.





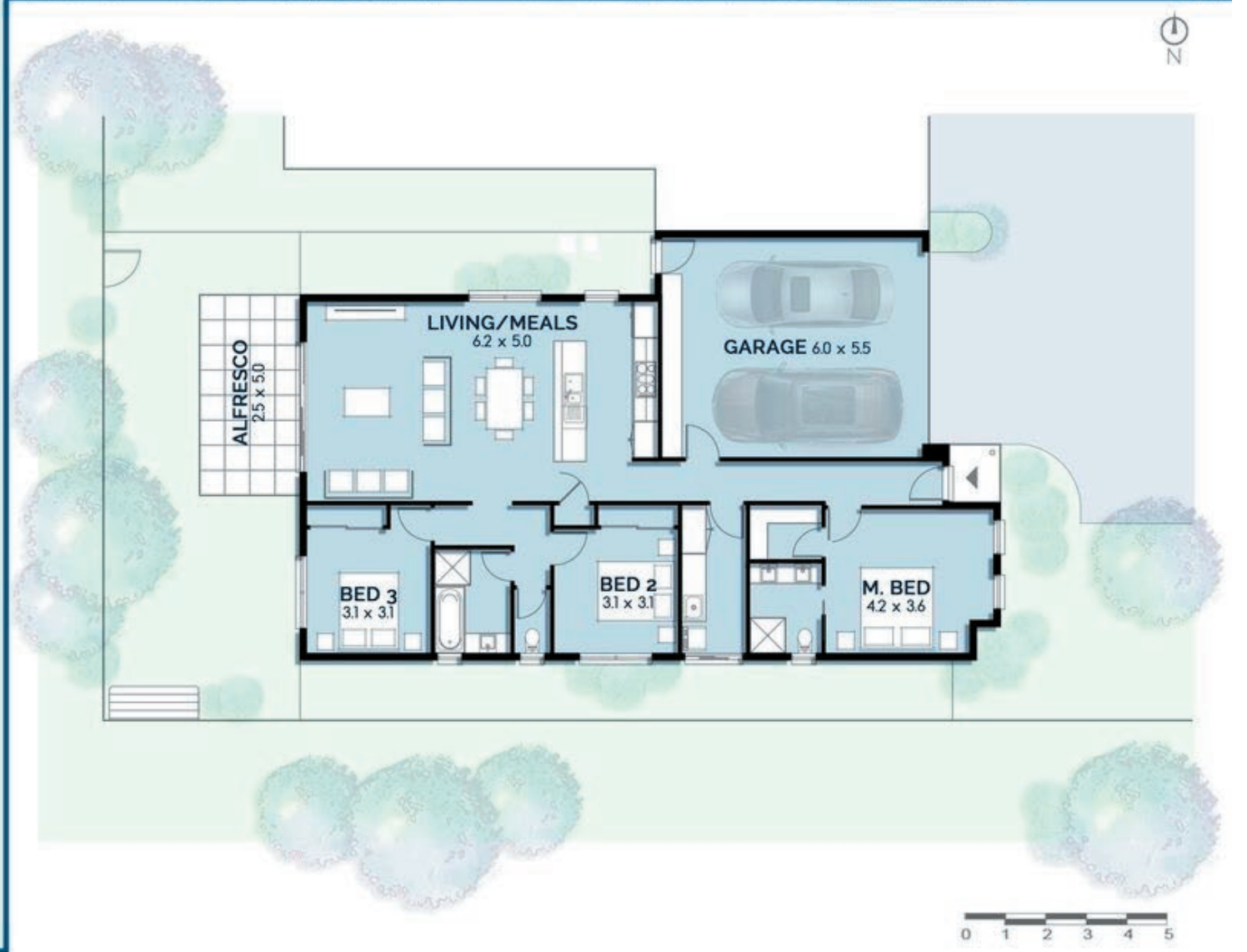
Residence 09

-  - 3
-  - 2
-  - 2

Internal - 123.0 m²
 Garage - 38.0 m²
 Total Area - 161.0 m²
 Backyard - 62 m²



This document has been produced solely for the information for potential purchaser, to assist them in deciding whether they are sufficiently interested in the properties to proceed further. The information contained in this material has been produced in good faith with due care. We do not warrant the accuracy of any information contained herein and do not accept liability for negligence, any error or discrepancy or otherwise in the information. This document may be subject to change without notice.





Gardenia

HASTINGS

Residence 10

- 3
- 2
- 2

Internal - 120.5 m²

Garage - 38.2 m²

Total Area - 158.7 m²

Backyard - 84 m²





This document has been produced solely for the information for potential purchaser, to assist them in deciding whether they are sufficiently interested in the properties to proceed further. The information contained in this material has been produced in good faith with due care. We do not warrant the accuracy of any information contained herein and do not accept liability for negligence, any error or discrepancy or otherwise in the information. This document may be subject to change without notice.





Residence 11

-  - 3
-  - 2
-  - 2

Internal - 122.4 m²
 Garage - 37.3 m²
 Total Area - 159.7 m²
 Backyard - 66 m²



This document has been produced solely for the information for potential purchaser, to assist them in deciding whether they are sufficiently interested in the properties to proceed further. The information contained in this material has been produced in good faith with due care. We do not warrant the accuracy of any information contained herein and do not accept liability for negligence, any error or discrepancy or otherwise in the information. This document may be subject to change without notice.





Gardenia

HASTINGS

Residence 12

-  - 3
-  - 2
-  - 2

Internal - 122.4 m²

Garage - 37.3 m²

Total Area - 159.7 m²

Backyard - 93 m²



This document has been produced solely for the information for potential purchaser, to assist them in deciding whether they are sufficiently interested in the properties to proceed further. The information contained in this material has been produced in good faith with due care. We do not warrant the accuracy of any information contained herein and do not accept liability for negligence, any error or discrepancy or otherwise in the information. This document may be subject to change without notice.





Residence 13

-  - 3
-  - 2
-  - 2

Internal - 123.0 m²
 Garage - 38.0 m²
 Total Area - 161.0 m²
 Backyard - 57 m²



This document has been produced solely for the information for potential purchaser, to assist them in deciding whether they are sufficiently interested in the properties to proceed further. The information contained in this material has been produced in good faith with due care. We do not warrant the accuracy of any information contained herein and do not accept liability for negligence, any error or discrepancy or otherwise in the information. This document may be subject to change without notice.





Residence 14

-  - 3
-  - 2
-  - 2

Internal - 126.6 m²
 Garage - 37.3 m²
 Total Area - 163.9 m²
 Backyard - 77 m²



This document has been produced solely for the information for potential purchaser, to assist them in deciding whether they are sufficiently interested in the properties to proceed further. The information contained in this material has been produced in good faith with due care. We do not warrant the accuracy of any information contained herein and do not accept liability for negligence, any error or discrepancy or otherwise in the information. This document may be subject to change without notice.



Another quality project delivered by:

PIERMONT

GROUP